

Grand Drive Raynes Park, SW20 9DR

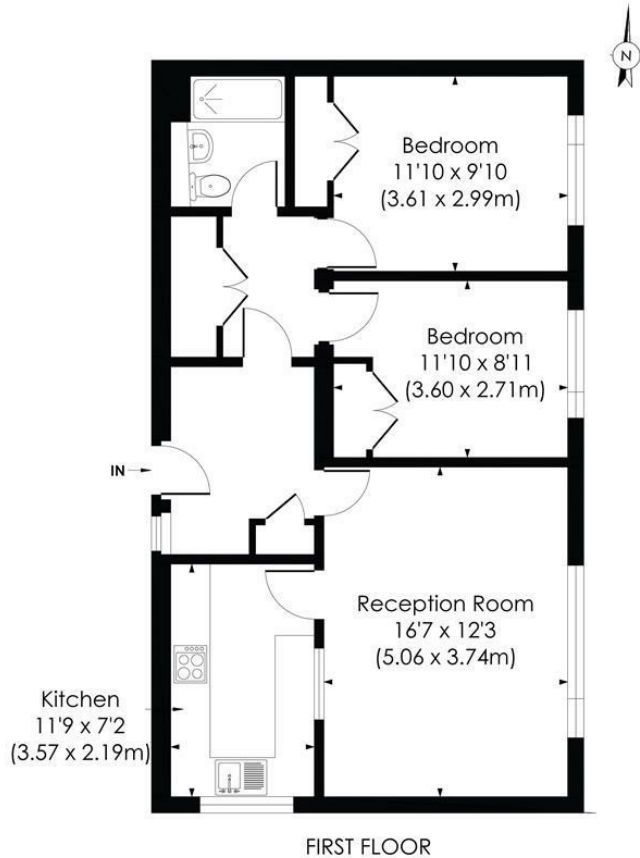
£450,000 Leasehold



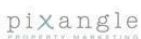
This spacious TWO DOUBLE BEDROOM apartment is situated only 0.3 Miles to Raynes Park Station, High Street and the open spaces of Prince Georges Playing Fields. The home offers generous accommodation throughout and is offered to the market with no onward chain.

GRAND DRIVE, SW20

Approx. Gross Internal Floor Area
728 Sq. ft/67.59 Sq. m

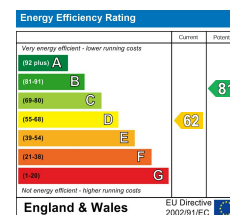


© Pixangle Property Marketing Ltd. info@pixangle.com Tel: 0208 870 2118



This floor plan has been prepared for the purpose of illustration only in accordance with the latest RICS code of measuring practice and is not to scale. All measurements and areas are approximate and whilst every effort has been made to ensure the accuracy of the plan contained here, no responsibility is taken for any error, omission or misstatement.

- Two Double Bedrooms
- Open Plan Kitchen Living Room
- Garage
- 92 Year Lease
- Ground Rent £350.00 Per Annum
- Service Charge £2200.00 Per Annum
- 0.3 Miles To Raynes Park Station And High Street
- No Onward Chain
- EPC Rating - D
- Council Tax Band - C



For Free Mortgage Quote and Best Mortgage Rates, call Ellisons Mortgage Advisor on 0208 944 9595



Although these particulars are believed to be correct, their accuracy is not guaranteed and they do not form part of any contract.

Celebrating 30 years of successful Sales and Lettings in Merton

